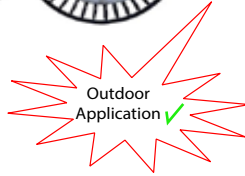




150W UFO

LED HIGH BAY



Product Feature

- AC Integrated Driver, High Reliability, PF>0.98
- With OVP, OTP and OCP Protection
- 6KV Surge Protection(External SPD)
- Philips LED SMD3030, CRI>80
- Can pass CE, RoHS,FCC,SAA,RCM Certification
- Waterproof IP65
- CCT:3000K,4000K,6000K Options
- Long life:30,000 hrs,3 years warranty
- 60° beam angle (with lens)
- High efficiency, High Lumen LUX
- No UV or Infrared Radiation

Product Application

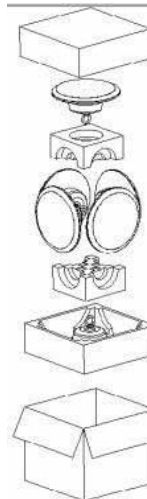
Storage Lighting, Industrial Lighting, Architectural Lighting, Landscape Lighting, Store Lighting, Stadium Lighting



Description

Light Source:	SMD 3030 195pcs (Philips LED chips)		
Rated Power(W):	150W±5% @230VAC		
Input Voltage(V):	200-265VAC		
PF:	0.98 PF		
Led Driver:	AC linear		
Surge Protection:	6KV Surge Protection (External SPD)		
Luminous(lm):	18000lm±5%		
Effect (lm/W)	112 lm/W		
CCT(K):	WW 3000K	NW 4000K	CW 6000K
CRI:	>80		
Beam Angle:	60°		
Material:	Aluminum Housing +PC Lens		
Waterproof	IP65		
Lifespan(H)	>30,000		
Operation Temp.	-33℃-55℃		
Dimension(mm) /Weight	∅ 337*140mm/ 1.5kg		
Packing:	520*520*420mm/6PCS/11.5KG		

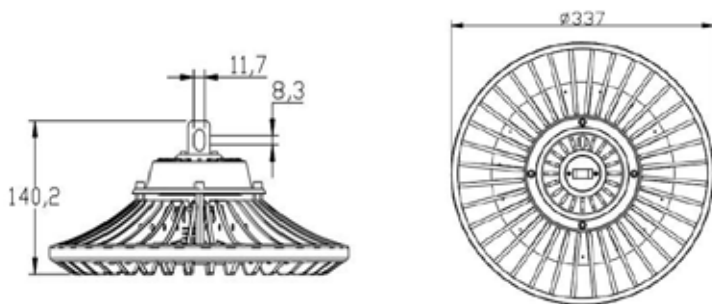
Packing



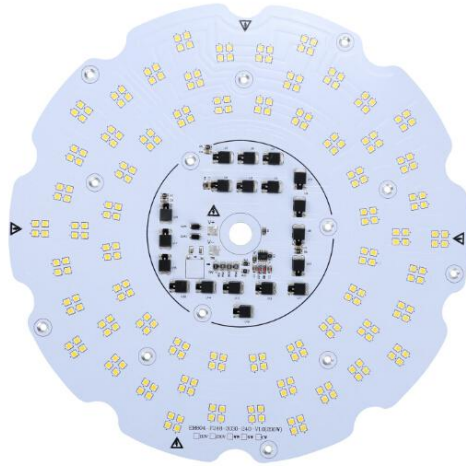
- 包装:
1. 外箱材质: K=K
 2. 内衬材质: 珍珠棉
 3. 每箱装6PCS
 4. 成品单重: 3.7Kg/PCS
 5. 整箱毛重: 25Kg
 6. 整箱尺寸: 520X520X500mm (长X宽X高)
 7. 适用货柜: 标准40尺, 11.8X2.13X2.18M (长X宽X高)

- Packing:
- 1 outer case material: K=K
 - 2 lining material: pearl cotton
 - 3 each case is fitted with 6PCS
 - 4 finished single weight: 3.7Kg/PCS
 - 5 gross weight: 25Kg
 - 6 full size: 520X520X500mm (length X width X height)
 - 7 applicable container: Standard 40 feet, 11.8X2.13X2.18M (long X width X height)

Dimension



PCB Light Board



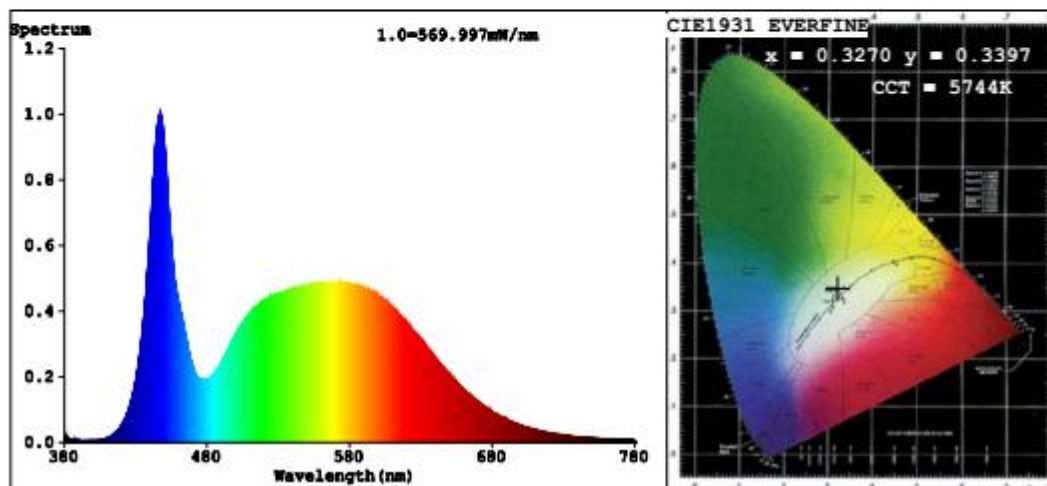
60 Degree Multiple Lens



Aluminum Heat Sink



Spectrum Test Report



Color Parameters:

Chromaticity Coordinate: $x=0.3270$ $y=0.3397/u'=0.2037$ $v'=0.4760$

CCT=5744K(Duv=0.0018) Dominant WL:Ld =505.5nm Purity=1.9%

Ratio:R=14.4% G=81.0% B=4.7% Peak WL:Lp=447.1nm FWHM=19.2nm

Render Index:Ra=81.9

R1 =81 R2 =85 R3 =88 R4 =83 R5 =82 R6 =80 R7 =86

R8 =69 R9 =6 R10=65 R11=84 R12=62 R13=81 R14=93 R15=76

Photo Parameters:

Flux = 17770 lm Eff. : 117.18 lm/W Fe = 56.40 W

Electrical parameters:

V = 220.84 V I = 0.6935 A P = 151.7 W PF = 0.9902

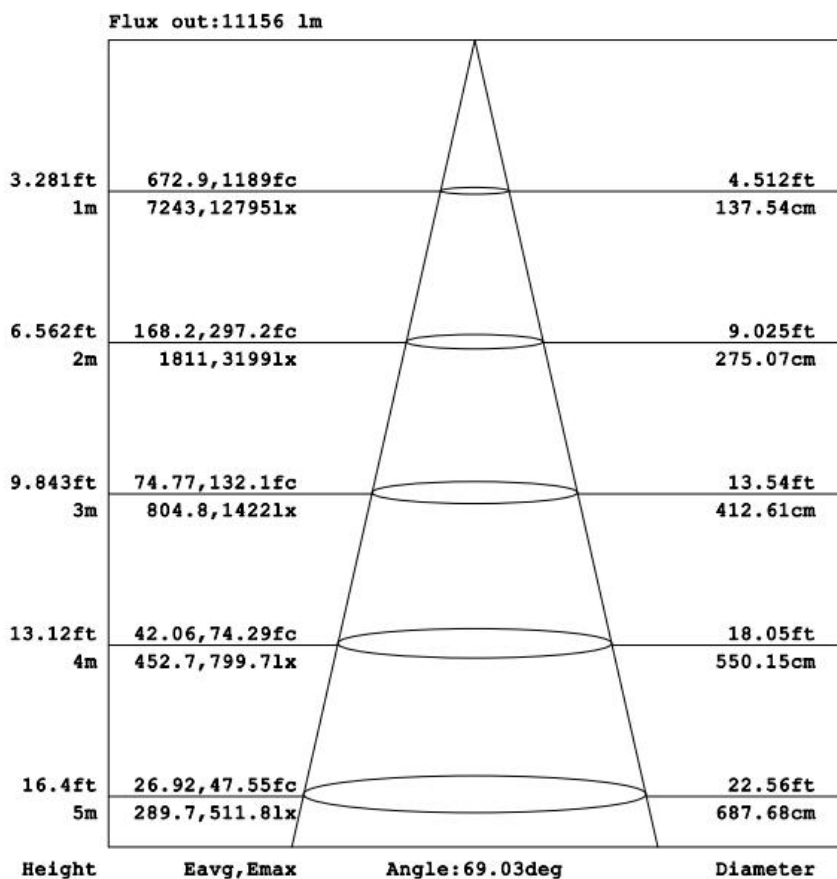
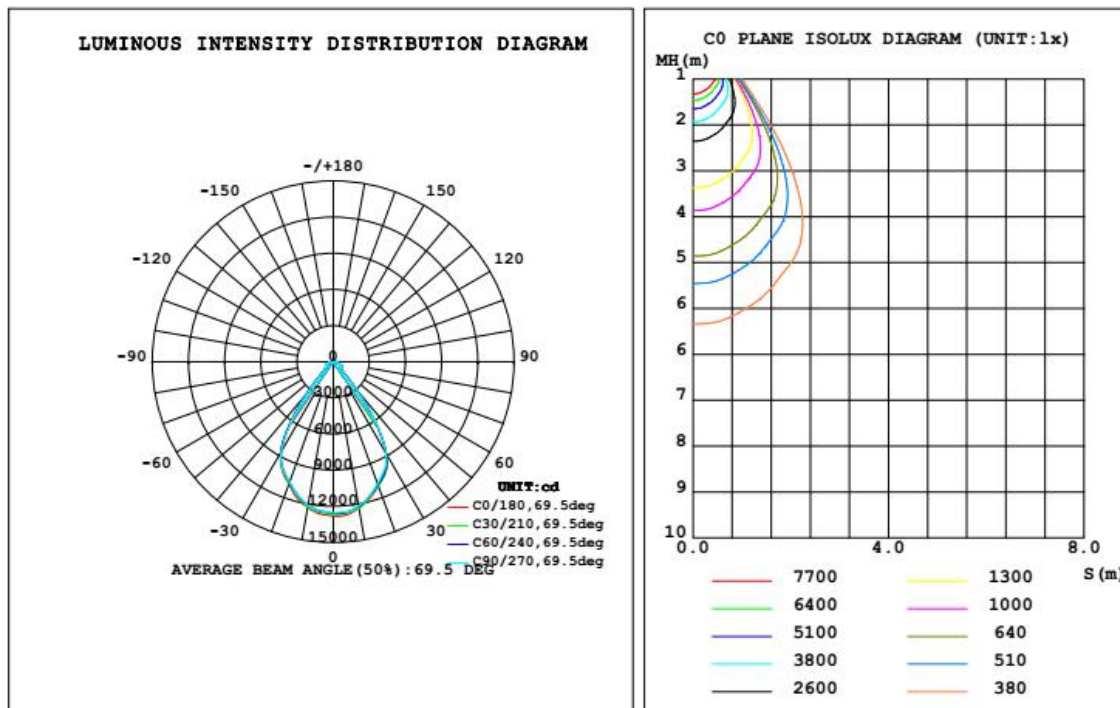
WHITE:ANSI_5700K

Status: Integral T = 10 ms Ip = 14743 (22%)

Model:
Tester:
Temperature:25.3Deg
Manufacturer:

Number:1034
Date:2017-02-17
Humidity:65.0%
Remarks:1

150W,200VAC,6000K,60 degree ,Distribution test



Note: The Curves indicate the illuminated area and the average illumination when the luminaire is at different distance.